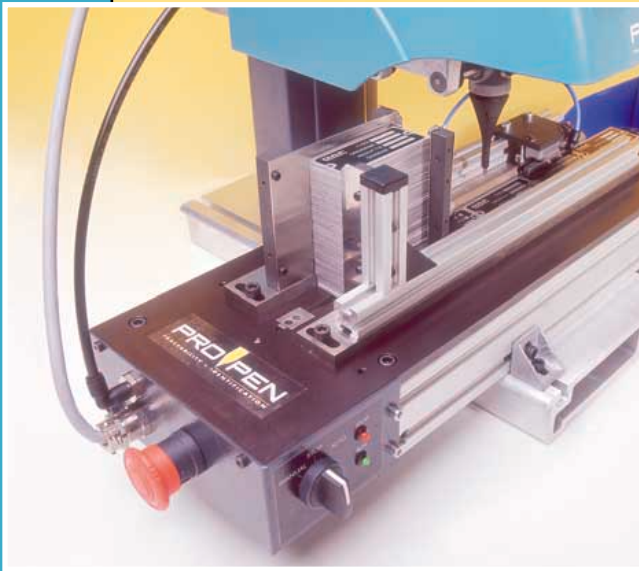


# Nameplate and tag marking

## TAG 3000

**Automatic identification  
plate marking system**



[www.pro-pen.com](http://www.pro-pen.com)

# 1 A COMPLETE SOLUTION

The TAG 3000 is a complete solution. This system is directly connected to the P3000 machine and will permit the automatic feeding, marking, and ejection of identification plates without an operator.

# 2 AN INDEPENDENT UNIT

By simply connecting a keyboard, the operator can quickly create the marking files. The powerful software integrated into the P3000 offers the possibility of personalizing up to 25 marking areas per plate (text, dates, hours, serial numbers, batches, shifts,...) the variable data will change automatically (no need for a PC).

# 3 EASY ADJUSTMENT

The TAG 3000 will accept a wide variety of plates. It is very easy to change the format of the plate and to adjust for different sizes and thicknesses.

# 4 MARKING QUALITY

The single marking tool will produce very high legibility, high quality, permanent marks. It permits the marking of variable character heights (between 0.04" and 3.15"), as well as logos. In addition, the low-impact micro-percussion marking will not deform the plates.

# 5 FLEXIBLE

The TAG 3000 is very easy to handle and is quickly installed on the P3000. When removed from the machine, it is possible to mark all types of metal and plastic parts with the P3000 (tools, plastic parts, keys, mechanical parts, up to 11" high).

Optional interface for connection to database files is possible. For more information, contact your distributor.

## TECHNICAL INFORMATION

Plate format: 0.8"x0.8" to 3.8"x3.8" (20x20 to 98x98mm)

Plate thickness: 0.025" to 0.08" (0.6 to 2mm)

Chimney height: 4" (100mm)

Marking area: 4"x4" (100x100mm)

Marking speed: up to 5 charac/sec

Size of characters: from 0.04" to 3.15" (1 to 80mm)

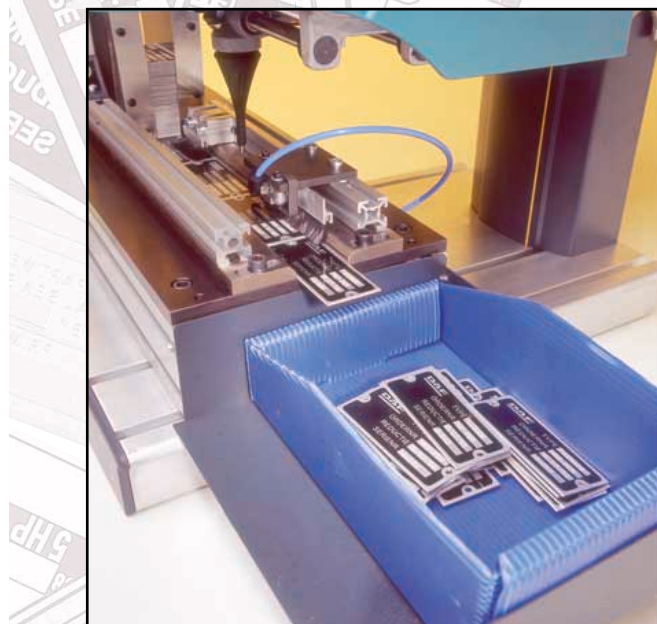
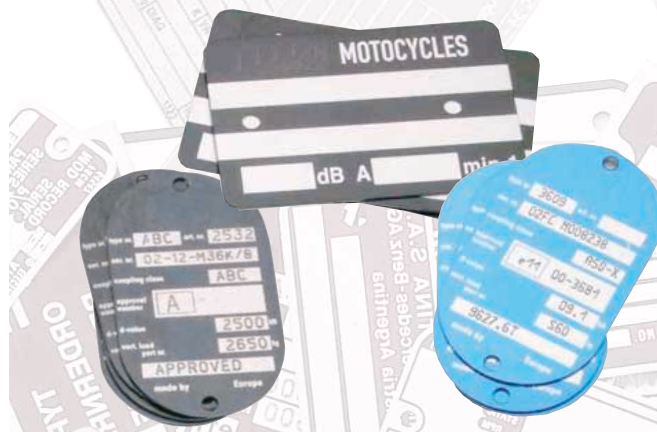
Possible to mark in linear, angular, radial, mirrored, inverted, reflected, compressed and inclined modes.

Dimensions: LxHxW = 28"x7.8"x6.7" - Weight: 11kg net

Electrical supply: 30 V - Electric consumption: 1 A

Pressure: 6 bar / 87 PSI - Operating temperature : 5 - 40 °C.

**Remark :** the plates should be flat with rounded corners, no burrs and no film..



Distributor



[www.pro-pen.com](http://www.pro-pen.com)

DPU5021 001 TAG3000 - 320 624 331 RCS BOURG - DIFES Lyon - Photos Dipes & Alize Studio - PRO-PEN reserves all rights on improvement of its products. This document is not contractual.